



ENVIRO

STORMWATER MANAGEMENT SOLUTIONS

**COMPLIANCE AT
THE LOWEST COST**





“Enviro is dedicated to protecting our client’s environmental compliance”

SAFETY:

Enviro **eliminates** confined spaces in accordance with national safety regulation.

Confined spaces can result in permanent injury and/or fatalities.

MAINTENANCE:

Maintenance is carried out by a local contractor, once per year.

By eliminating confined space entry for service, the risk is eliminated for the life expectancy of 100 years.

This represents a safer alternative at a lower cost to the owner.

COMPLIANCE & PERFORMANCE:

Enviro is the only known supplier in Australia to publish compliance statements in accordance with Australian Consumer Law, requiring performance claims to be verified by independent agencies.

SUSTAINABILITY:

Sustainability is a priority with the use of low carbon materials that can be recycled indefinitely.

Enviro's Maintenance Advantage:

Safe + Reliable

- 💧 No confined space entry
- 💧 No heavy lifting of grates or baskets
- 💧 Reduced risk and minimal disruption on site
- 💧 Eliminate exposure to criminal negligence

Simple + Cost-Effective

- 💧 Servicing required only once per year
- 💧 Completed by a licensed vacuum truck contractor
- 💧 Single access point with no complex or multiple service locations

No Consumables

Unlike conventional systems, Enviro systems do not require **ongoing replacement** of:

- 💧 Pit baskets
- 💧 Filter socks
- 💧 Cartridges
- 💧 Mechanical valves
- 💧 Filter media
- 💧 Float valves

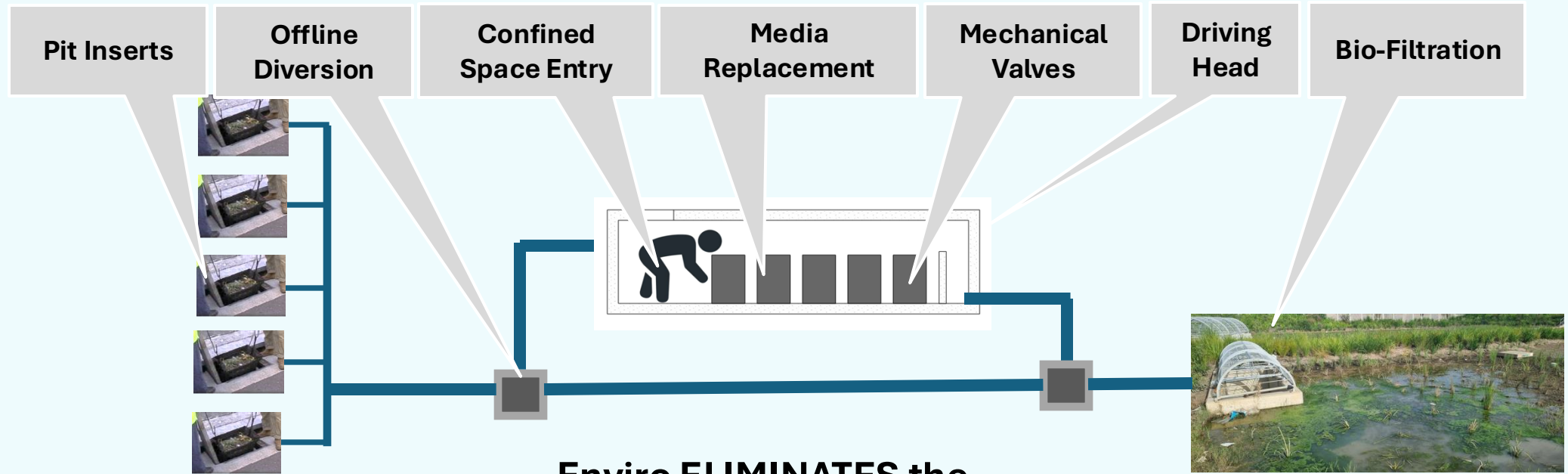


Enviro **ELIMINATES** the examples shown below which are **UNSAFE, COSTLY, UNECESSARY + UNSUSTAINABLE.**



Aligned with Council requirements to ensure safe, simple maintenance.

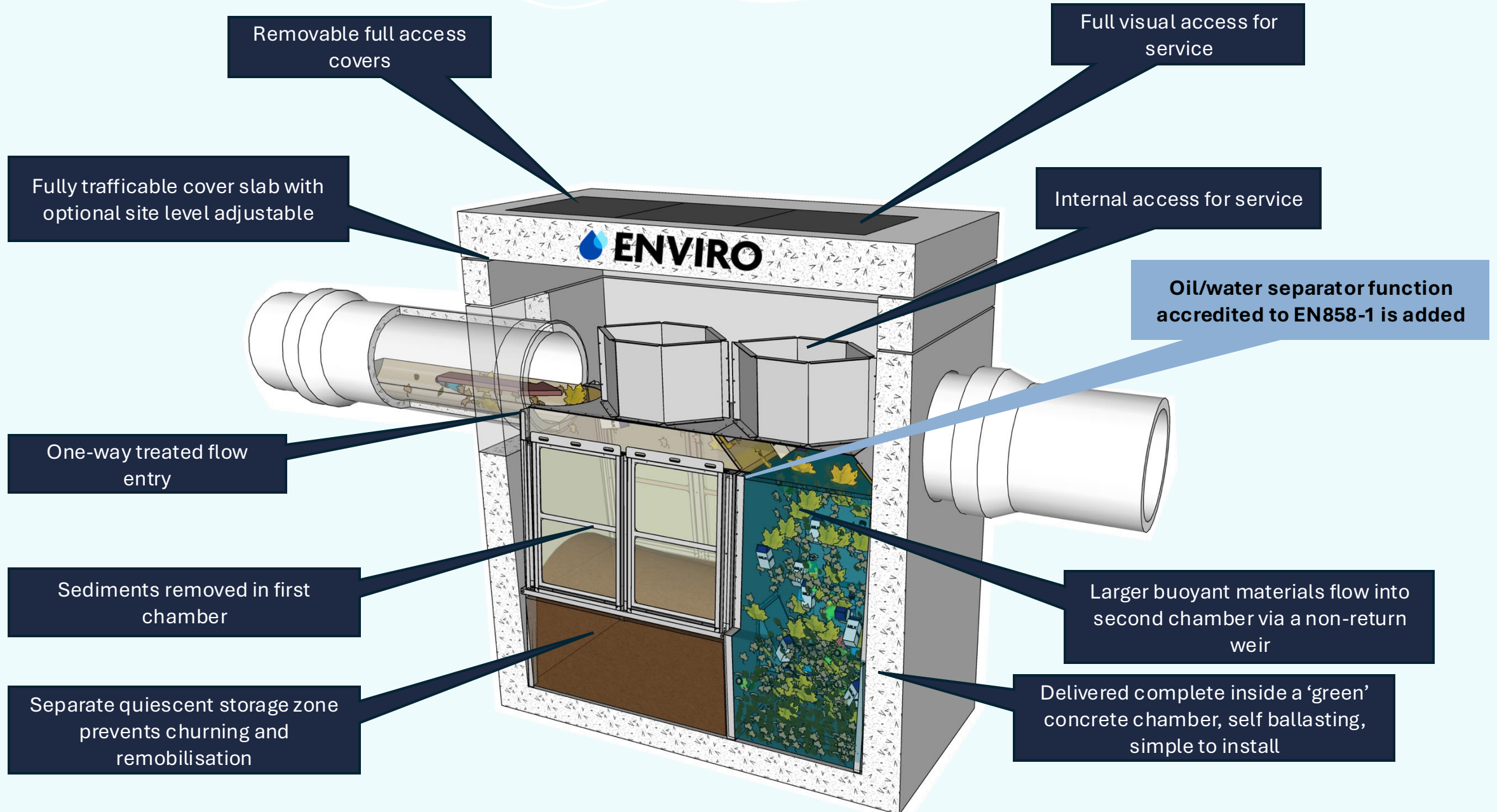
Alternative Systems on the Market



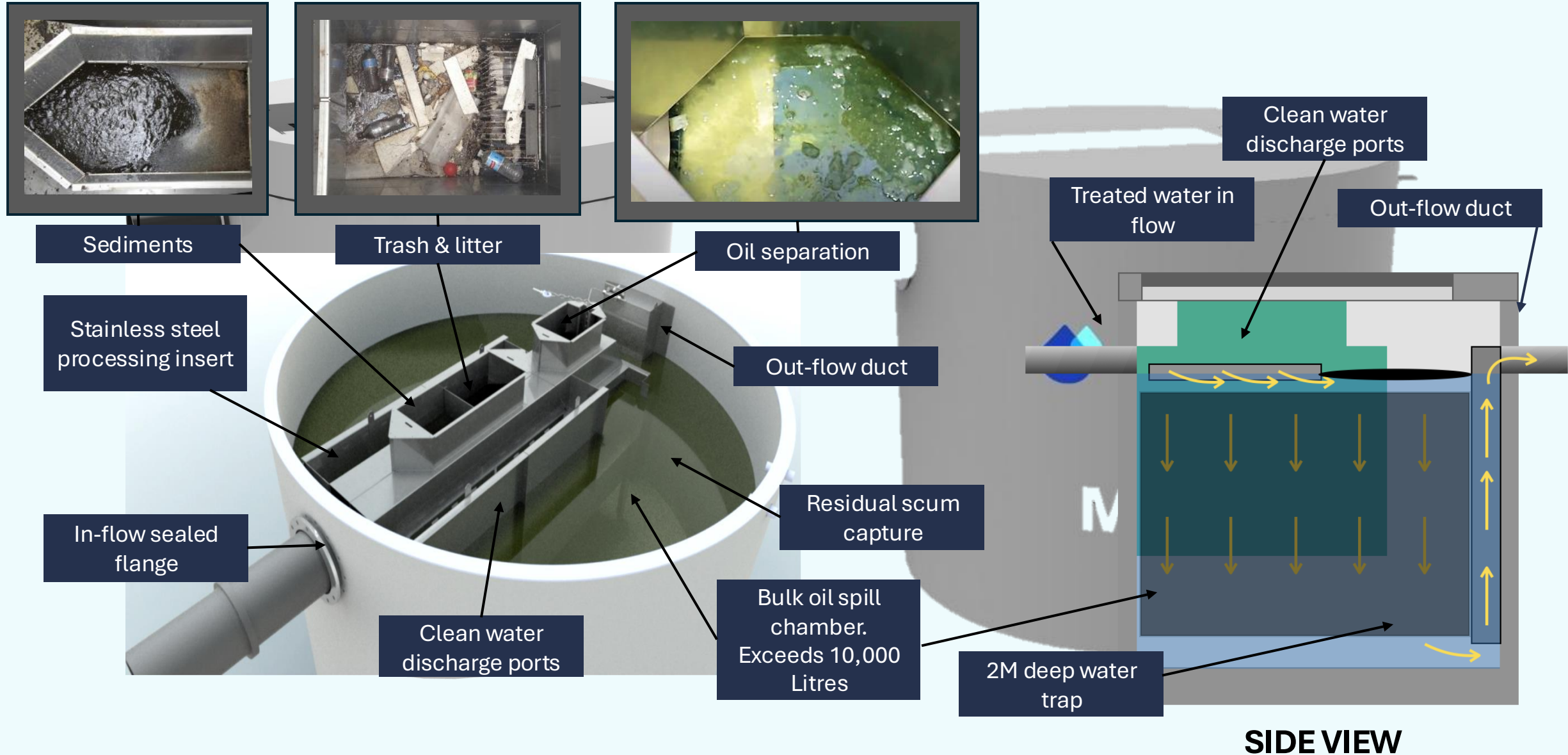
ELIMINATED



How Enviro Systems Work



OE + M Series For Catchments That Include Fuel Dispensing



PT Series

Integrated OSD – Pre-Treatment + Flow Control

PT Series, includes G or H Series Treatment

OSD provides the lowest cost solution, flexible depth and footprint to suit any site

Only clean water enters the OSD through a low-level balance pipe



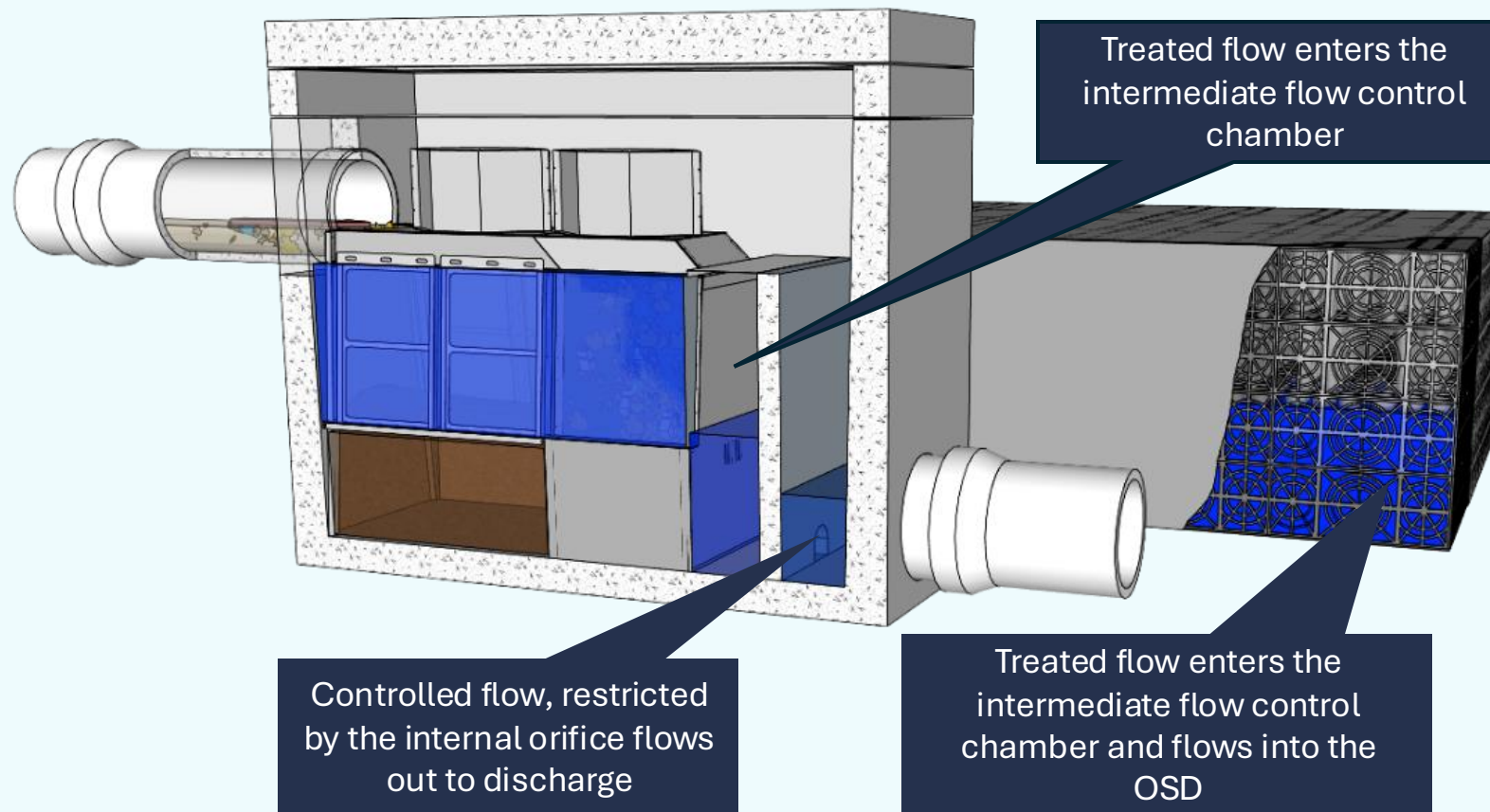
PT Series
OSD Pre-Treatment



The all-in-one pre-treatment integrated system with orifice flow control and top water level (TWL) weir provides the most cost-effective On-Site Detention (OSD) possible. The Enviro PT combines the functions of a gross pollutant trap (GPT), sediment separator and oil/water separator if required into **one (1) device** which is easily serviced by a local contractor.

PT Series

Integrated OSD – Pre-Treatment + Flow Control



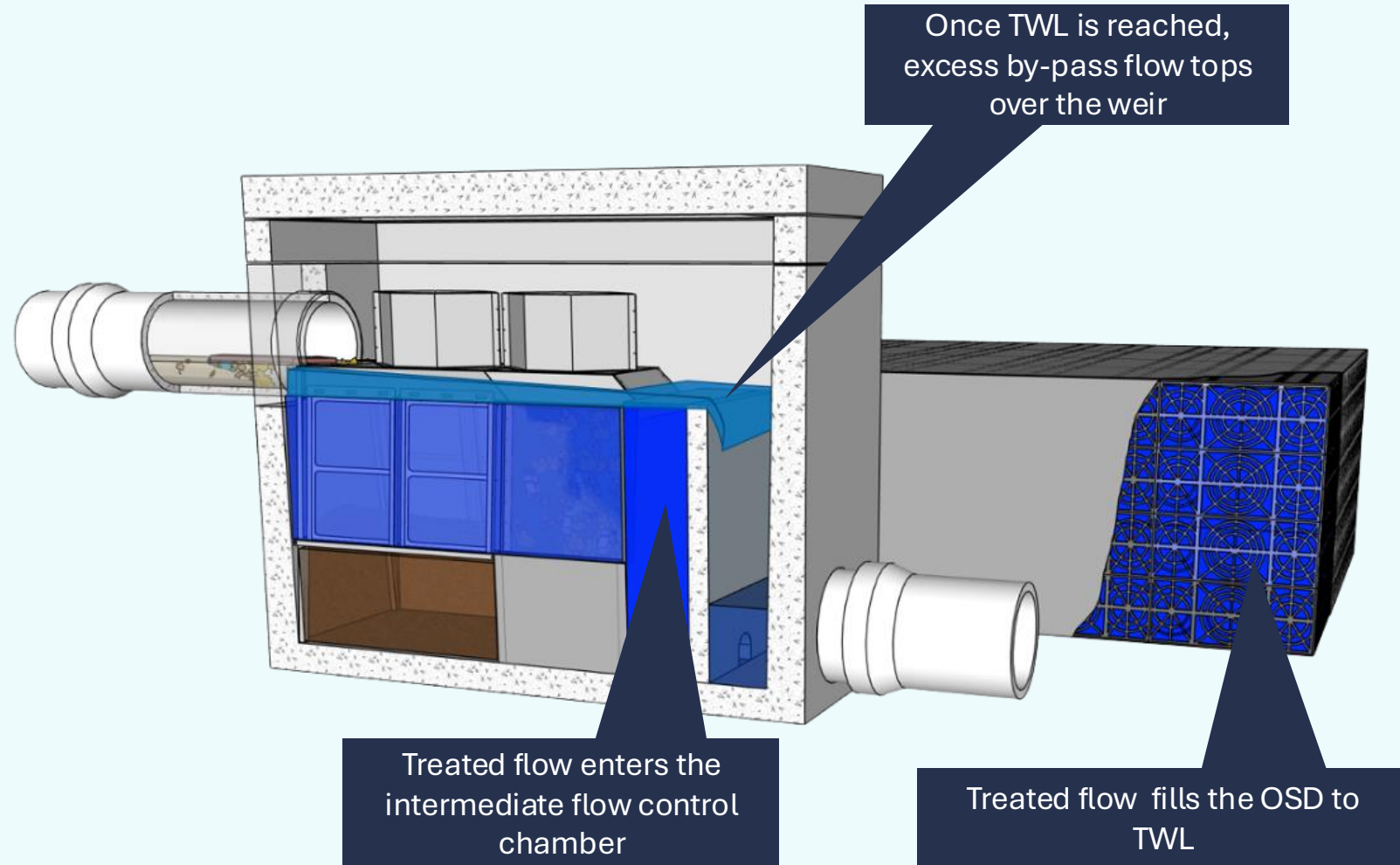
PT Series
OSD Pre-Treatment



During a rainfall event, only clean water enters the intermediate chamber with discharge flow restricted by the orifice. The OSD is charged via the balance pipe performing the task of modulating the post development flow as required.

PT Series

Integrated OSD – Pre-Treatment + Flow Control



PT Series
OSD Pre-Treatment



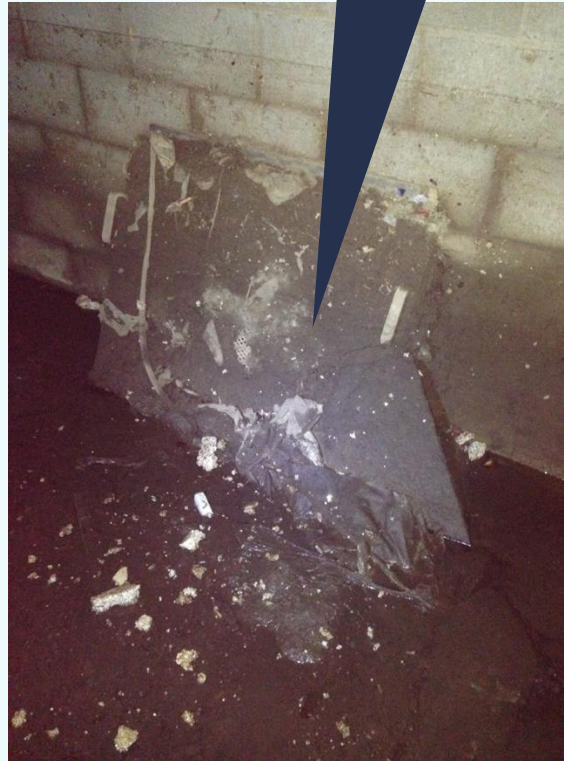
The OSD should have reached TWL as the rainfall event enters the receding limb. The weir over tops with by-pass and flows until the orifice outflow exceeds in-flow and the process reverses. The OSD water level discharges via the balance pipe, through the orifice.

OSD Examples WITHOUT Pre-Treatment

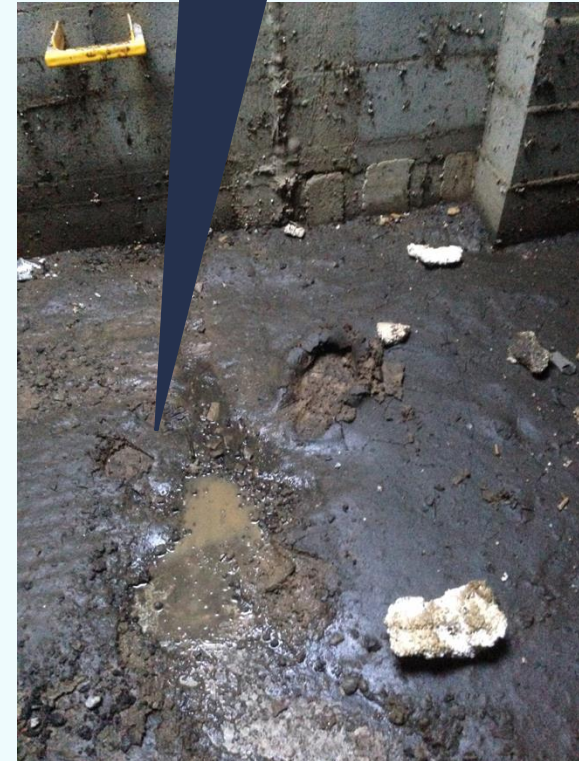
Mesh screen
blocked



Mesh screen
blocked



Sediment build-up



The PT ensures the OSD does **not** become a major maintenance cost, potentially leading to complete collapse. The above are photos from OSDs that did not include pre-treatment. The result was either total weir by-pass or flooding.

Safe + Simple

Low-Cost Maintenance

Table 1 - Enviro Vs Torpedo Tank Costings

		Enviro	Torpedo	Variation	%
Supplied Price:	\$	38,000	\$ 45,000	\$ 7,000	16%
Excavation:	\$	3,080	\$ 11,000	\$ 7,920	72%
Geo Fabric:	\$	-	\$ 2,160	\$ 2,160	100%
Anchorage:	\$	-	\$ 970	\$ 970	100%
Backfill Material:	\$	-	\$ 4,500	\$ 4,500	100%
Backfill Duration:	\$	880	\$ 2,640	\$ 1,760	67%
Transfer Slab:	\$	-	\$ 8,000	\$ 8,000	100%
Covers:	\$	-	\$ 1,800	\$ 1,800	100%
Total Installed:	\$	41,960	\$ 76,070	\$ 34,110	45%
Annual Service:	\$	1,260	\$ 9,770	\$ 8,510	87%

Table 2 - 25-year Life Cycle Costs

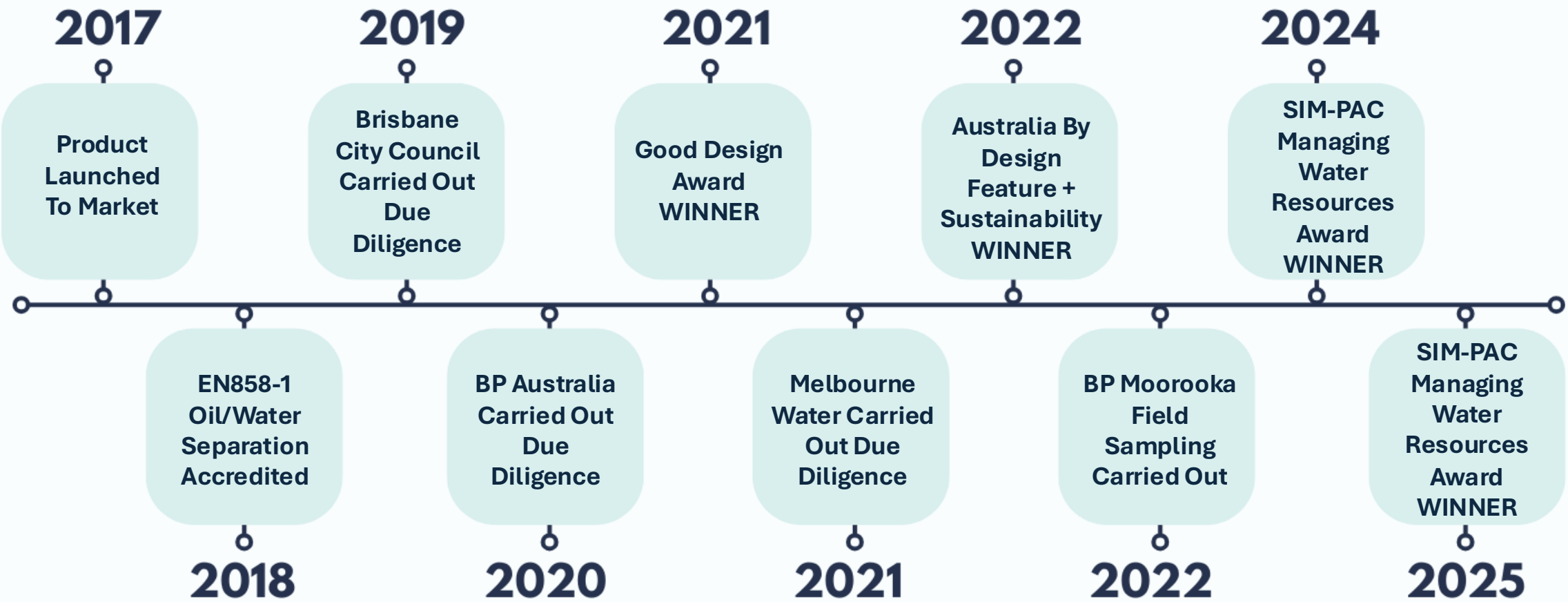
Year	Enviro	Other	Variance	Enviro
1	\$ 43,220	\$ 85,840	\$ 42,620	50%
5	\$ 48,260	\$ 124,920	\$ 76,660	61%
10	\$ 54,560	\$ 173,770	\$ 119,210	69%
15	\$ 60,860	\$ 222,620	\$ 161,760	73%
20	\$ 67,160	\$ 271,470	\$ 204,310	75%
25	\$ 73,460	\$ 320,320	\$ 246,860	77%

‘Enviro ensures low cost, whole of life compliance.’

Compared to fibreglass-based products, Enviro systems are: -

- **45% lower cost to install** (*refer table 1*)
- **87% lower cost to maintain** (*refer table 1*)
- **77% lower cost to own over 25 years** (*refer table 2*)
- **Fibreglass tanks should be replaced at this time**
- **Enviro chambers outlast 4 x fibreglass chambers**

Enviro Timeline + Performance Claims



Pollutant	UOM	Acceptable	LOR	Effluent	Reduction
TPH, C10-C36	µg/L	5,000	50	50	100%
C6-C9 Fraction	µg/L	5,000	20	20	100%
C10-C14 Fraction	µg/L	5,000	50	50	100%
C15-C28 Fraction	µg/L	5,000	100	100	100%
C29-C36 Fraction	µg/L	5,000	50	50	100%
Suspended Solids	mg/L	25	5	5	100%
Nitrogen as TKN	mg/L	0.5	0.1	0.1	100%
Total Phosphorous	mg/L	0.05	0.01	0.01	100%

Enviro's Awards

2021



**GOOD
DESIGN
AWARD®**
WINNER

Good Design Award for
Social Impact in
Global Water Sustainability

2022



Winner Australia By
Design
Sustainability
Feature



2022



2024



2025





The green concrete used in each OE30.10 reduces CO₂ by approx. 300kgs.

30 kgs of polypropylene is equal to one household's annual waste.

“Green Concrete has a long-life span and can be recycled indefinitely.”



Enviro's use of green concrete slashes carbon emissions by 80%.

The use of Re-Poly fibre, has created over 500 hours of paid work for NDIS employees.





**SPEAK TO ONE OF OUR FRIENDLY
SENIOR ENGINEERS TODAY**



**SHONE +61 427 648 489
DIGIN +61 419 785 289**



INFO@ENVIROAUSTRALIS.COM.AU



PO BOX 34, ANGASTON, SOUTH AUSTRALIA 5353